

Checking your PC for compatibility with Dragon Version 10

Download the free CPU-Z 1.47 software from <http://www.cpuid.com/cpuz.php>

After downloading, run the CPUZ program

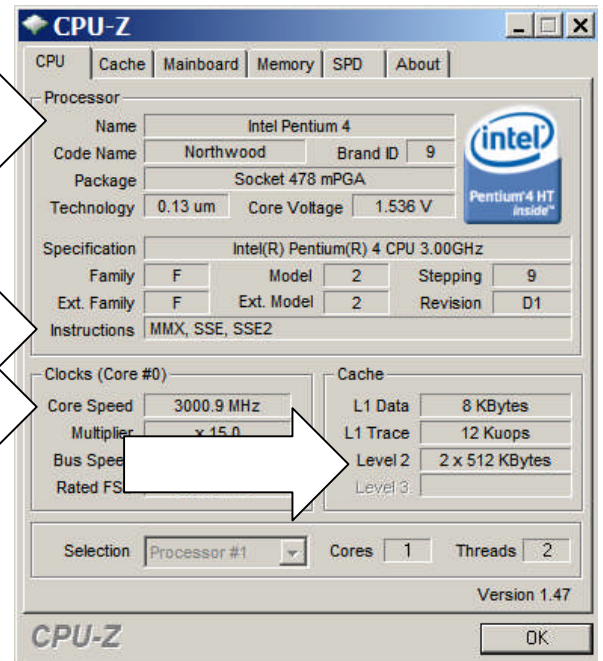
You will then see this program screen:

The name is the name of the processor

Next to Instructions, it must list SSE2, as it shows here, to be able to work with version 10

The Core Speed, is the speed of your pc in megahertz (MHz) The listed minimums required are: CPU: Intel Pentium 4 or later, or AMD Athlon 64, with speed of 1000 MHz (1 GHz) or faster. The recommended amount is 2.4 GHz (1.6 GHz dual core) (Shown is 3000.8 MHz or 3 GHz).

Level 2 Cache must be 512 Kbytes or more



Click on the memory tab at the top and you will see this screen:

The Size is the amount of RAM memory you have, in Mb (Mega Bytes) The amount showing here, 1536 Mbytes, is 1.5 GigaBytes.

Dragon 10 specifications say it needs 512 MB RAM, but you will want more, at least 1000 MB (1 GigaByte) RAM on XP PC's. For Vista PC's, the specification is 1000 MB, but you would want at least 1500 MB (1.5 GigaBytes).

NaturallySpeaking can not run on a Windows 64 bit operating system. Make sure, especially if you upgrade to Microsoft Vista Ultimate, it is set up as 32 bit, not 64 bit.

NaturallySpeaking now comes on a DVD disk, so you must have a DVD drive, to install the software. We have available a service to copy the install files to a USB drive, if you do not have a DVD drive.

